

Recycling Industry

Bond Consulting Services: Experts in Business Systems for Recycling Companies

Are Your Recycling Company's Business Systems in the Dark Ages?

If your recycling operations and accounting systems have failed you, and you feel like you're in the dark ages, we understand. We've been there -- helping recycling companies like yours to transition from antiquated systems onto the latest technology, providing more accurate and timely information to enable management to make better decisions and grow profitably.



"We had very out-dated DOS-based systems that limited our ability to run the business.

The implementation of Microsoft Dynamics GP Integrated with ROM Significantly improved our operations and provided real-time financial results allowing us to make more timely and intelligent business decisions."

*- Wayne Young,
Vice President of Operations,
Main Street Fibers*

We're experts at implementing Microsoft's accounting solutions for Recycling Companies. Our recycling clients come to us when their business has outgrown their systems, and we offer:

- Scalable, easy-to-use and affordable software from Microsoft, including Dynamics GP and CRM
- Equipment maintenance solutions designed specifically for Recycling Companies
- Tight integration with Microsoft Office and the leading Recycling solution, ROM from 21st Century Programming
- Technology and accounting expertise in the recycling business

What do you need to run your Recycling Business more effectively?

Financial Management

Microsoft Dynamics GP provides robust functionality that's familiar to use and tightly integrated with Microsoft Office. Accurate and timely financial reporting, executive dashboards, and drill-down analytics enable more effective management of the business. We implement and support Dynamics GP to meet your unique recycling business needs.

How do you know when it's time to change your existing accounting system?

- Limited executive-level views of the business
- Inadequate information to make business decisions
- Delays in reporting

Equipment Maintenance

You own lots of heavy equipment that is very expensive and requires a lot of ongoing maintenance. We offer a specialized application to help you track equipment, manage repairs, and allocate costs to determine the profitability of equipment. Determining the source of problems and deciding when it's worthwhile to fix vs. scrap equipment is invaluable.

How do you know when it's time to change your equipment management system?

- Frequent breakdowns due to unmanaged maintenance work
- Difficulty determining the source of equipment problems
- Unsure whether to retire vs. fix a piece of equipment

Recycling Industry

What do you need to run *your* Recycling Business more effectively? (Continued)

Distribution and Supply Chain Management

Recycling companies manage massive inventories across many yards and geographic territories. And many are now equipped with bar coding, quoting and configuration tools to monitor, fulfill and invoice more accurately. Our solutions are fully integrated from the ground up to track inventory from the scale in, to the scale out, and every stage in between.

We'll connect your inventory, purchasing, and sales order processing with the rest of your business. You'll reduce your costs, improve cash flow, and ensure that you have the right stock, at the right time, in the right place to meet customer demand.

How do you know when it's time to change your operational system?

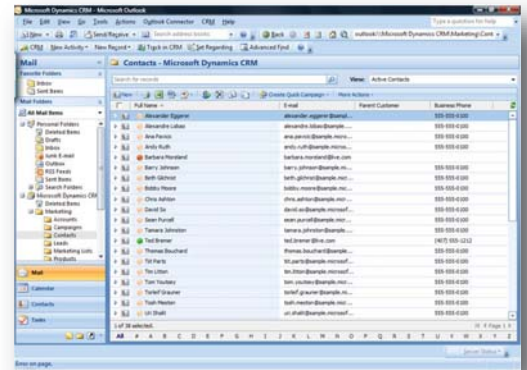
- Inventory loss
- Inaccurate reporting
- Slow-downs in delivery

Customer Relationship Management

We design Microsoft Dynamics CRM to work the way a recycling company works. Get all of your customer and prospect contact data and communications in one place. Manage marketing initiatives and track effectiveness of campaigns. Microsoft CRM is extremely easy to use because it works as part of your Outlook environment, so there's minimal training and rapid adoption.

How do you know when it's time to change your CRM system?

- Over or under-communicating with your key customers
- Inability to track effectiveness of marketing campaigns
- Non-integrated sales & marketing systems



Why Choose Bond Consulting Services?

We're experts in Recycling Business Systems

With more than a dozen clients in the recycling industry along with membership in ISRI - Institute of Scrap Recycling Industries, we have developed experience and a deep understanding of the current practices, trends and future direction that recycling companies are taking - and how technology can get them there.

For nearly a decade, Bond Consulting Services has focused on providing professional and effective project management and consulting services to the recycling industry. Our approach is to work closely with our clients to share best practices through technological innovation in the recycling industry. Our commitment is to deliver the appropriate solutions that exceed our client's expectations.

We have established relationships with many providers including 21st Century Programming, developers of Recycling Operations Management (ROM). As a Microsoft Gold Certified Partner, we implement and support the Microsoft Dynamics GP and CRM solutions.

Serious times call for serious solutions, so contact us and we'll bring your systems into the 21st Century. Call us to speak with one of our recycling experts to discuss what other recycling companies are doing successfully, and how those practices can apply to your business.

Call (562) 988-3451 x121 or email sales@BCSteam.com and talk to us about how we've unleashed the potential of companies like yours from the systems that were holding back their business.

www.BCSteam.com

www.21stcenturyprogramming.com